



2018-2019

ANNUAL REPORT





For two decades, First 5 Tuolumne County

has partnered with community agencies to support efforts in providing quality services for families with children ages prenatal through five. We have also worked to increase early childhood funding and inspire policies and practices that help meet the needs of young children and their families.

Our Mission

The First 5 Tuolumne County Commission promotes and supports the development of integrated resources that will:

- strengthen families and support safe home environments
- strengthen early care and education environments
- improve children's health



Our Vision

Tuolumne County is child-friendly, values families, and respects and honors the diversity of its residents.

Citizens of Tuolumne County recognize that home and childcare settings are critical contexts for children's development in the early years.

All Tuolumne County children will thrive in supportive, nurturing, and loving family and community environments, enter school healthy and ready to learn and become productive members of the community.

01 Highlights

**Some
Exciting
News from
2018-2019**



- 01** Increased the use of Developmental Screenings Across the County
- 02** Increased Access to Professional Development for Early Childhood Educators
- 03** Received Statewide Recognition for the Smile Keepers Dental Program
- 04** Distributed 345 Kits for New Parents
- 05** Participated in Advocacy Day in May to discuss policies that impact children ages 0-5

02 STRATEGIC GOALS CHECKLIST



GOAL 1

Invest in local programs that promote improved family functioning, early childhood development and health for children ages 0-5.

\$668,910

Invested

1,064

Parents Served

1,181

Children Served

GOAL 2

Seek a broader funding base for all First 5 investments to promote sustainability.

\$100,513

IMPACT

\$58,085

CDE Grants

\$13,945

MHSA and Sonora Area Foundation

GOAL 3

Provide organizational systems sufficient to support and optimize local investments

\$58,372

Admin costs

8%

budget spent on administration

Immeasurable

First 5 Network

03 GOALS and OBJECTIVES



First 5 funds in alignment with:

ATCAA
FAMILY
LEARNING
CENTER

ICES
RAISING
HEALTHY
FAMILIES

PUBLIC
HEALTH
VISITING
NURSING

SMILE
KEEPERS
DENTAL
PROGRAM

SOCIAL-
EMOTIONAL
LEARNING
FOUNDATIONS

The 5 Protective Factors Framework.



The Pyramid Model for Supporting Social Emotional Competence in Infants and Young Children (CSEFEL).



The Quality Rating Improvement System (QRIS).



The arena of early childhood health, in alignment with professional standards of practice.



05 Quality Early Learning



Improving Quality

100%

of the Head Start, Early Head Start, and State Preschool have engaged in Quality Improvement



Private Sites Engaged

16

private sites and their staff are engaged in improving their programs



Quality Ratings

4

Average Site Rating in 2018-2019. 5 is the highest possible score.



Improving Child Care Quality

\$36,875

in stipends went directly to childcare providers and preschool teachers who participated in professional development

06 Comprehensive Health and Development



Oral Health

1,014

children had dental screenings and most included fluoride varnish treatment

Developmental Screenings

48

Number of parents who participated in the Ages and Stages Questionnaire at Kinder registrations

35

Number of parents who participated in the Ages and Stages Questionnaire during a home visit.

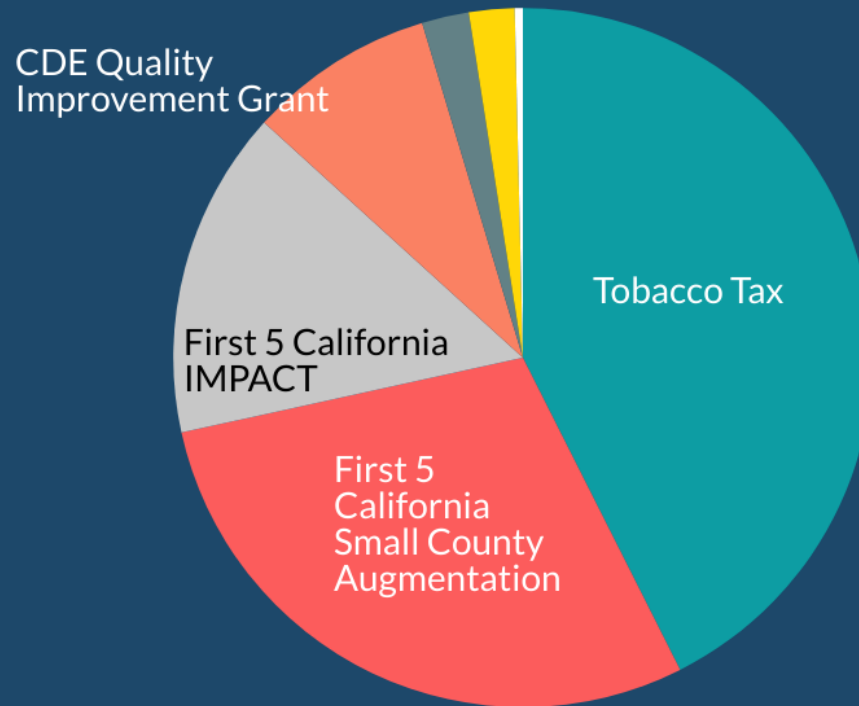
07 Funding Sources



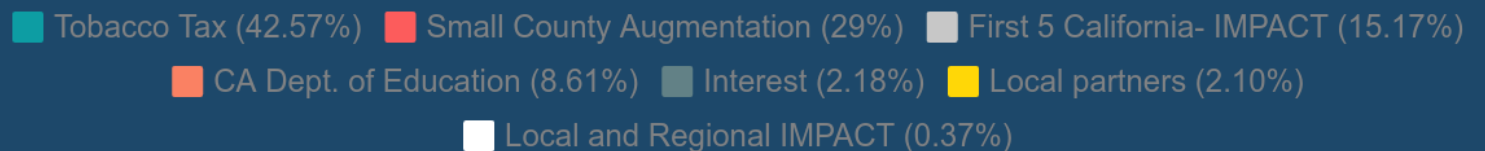
Outside Funding

14%

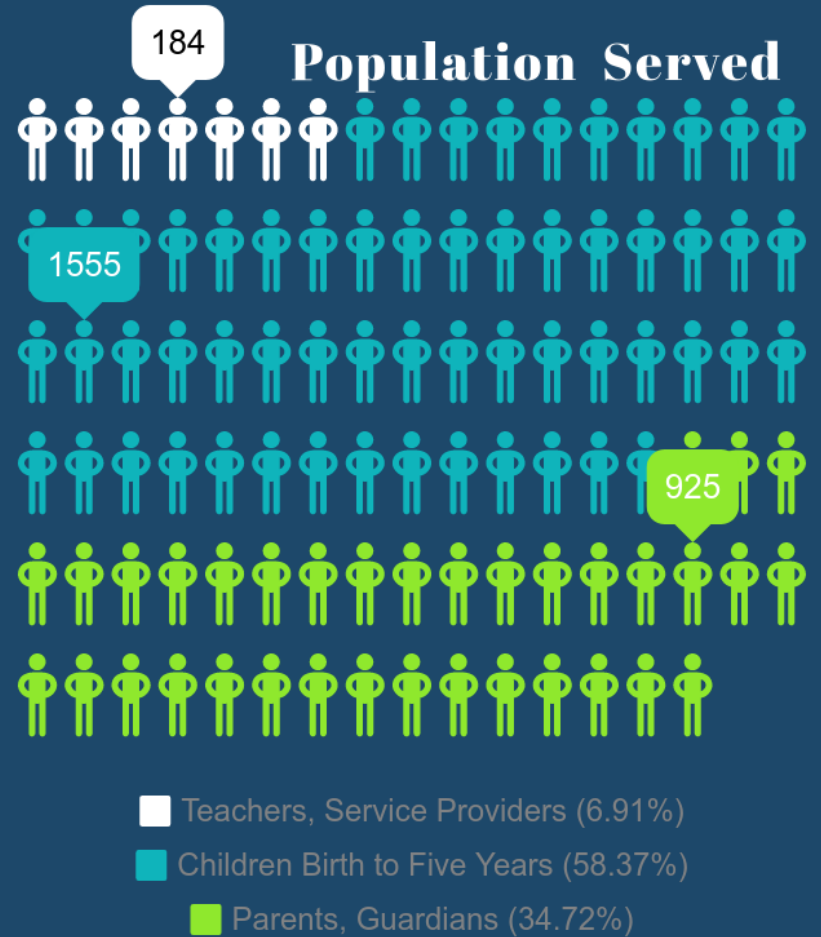
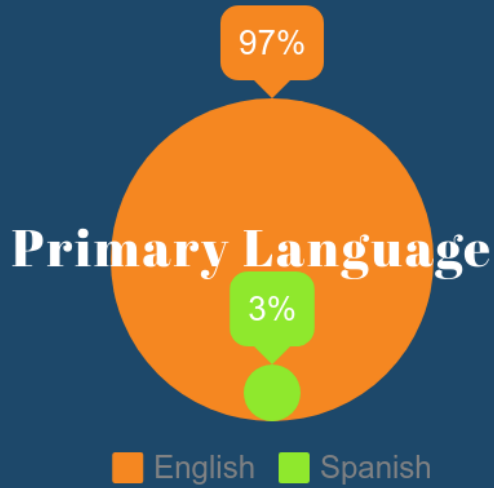
Funding that is not tied to Proposition 10 Tobacco Tax



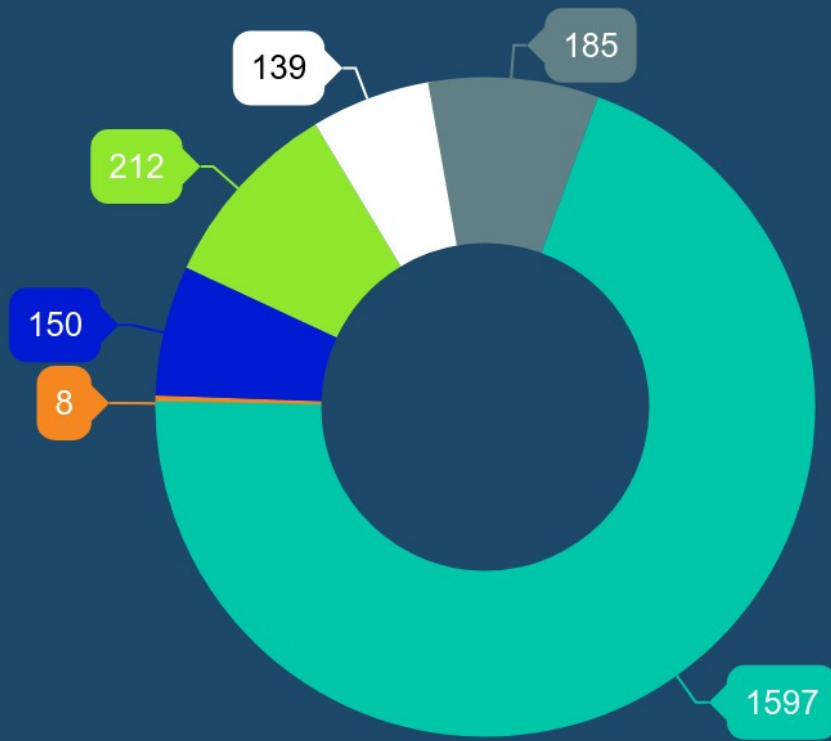
How Expenses Are Supported



08 Who Did We Serve?

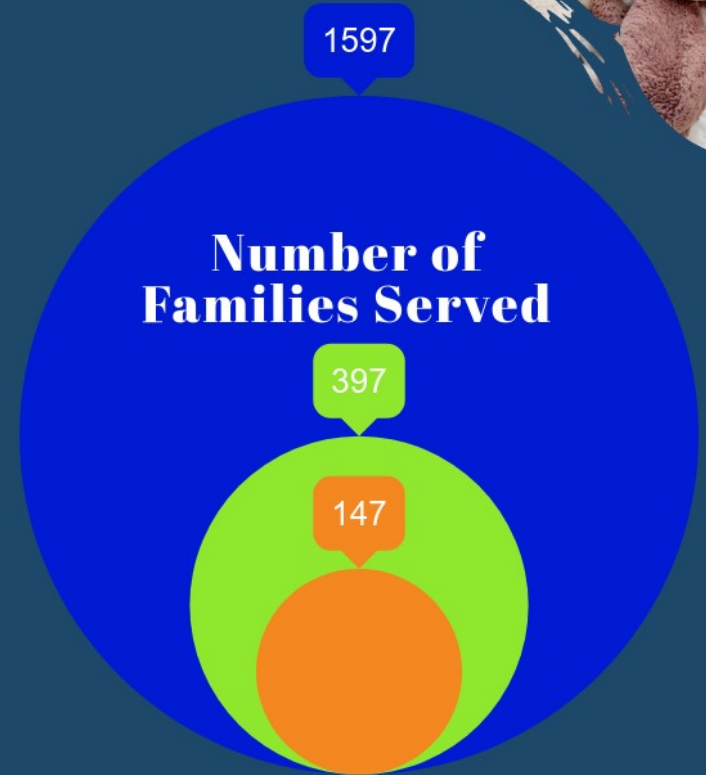


09 Who Did We Serve?



Parents, Children, & Providers Served

- Intensive Child Support (0.35%)
 ■ Health Outreach (6.55%)
- General Parenting Classes (9.25%)
 ■ Teacher Support (6.07%)
- Intensive Family Support (8.08%)
 ■ Oral Health (69.71%)

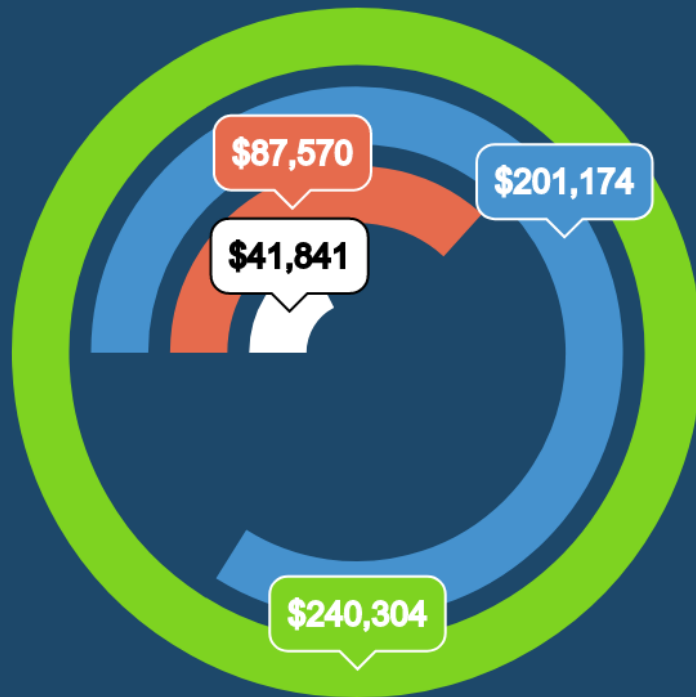


- Health
- Child Development
- Improved Family Functioning

10 Where did we invest?

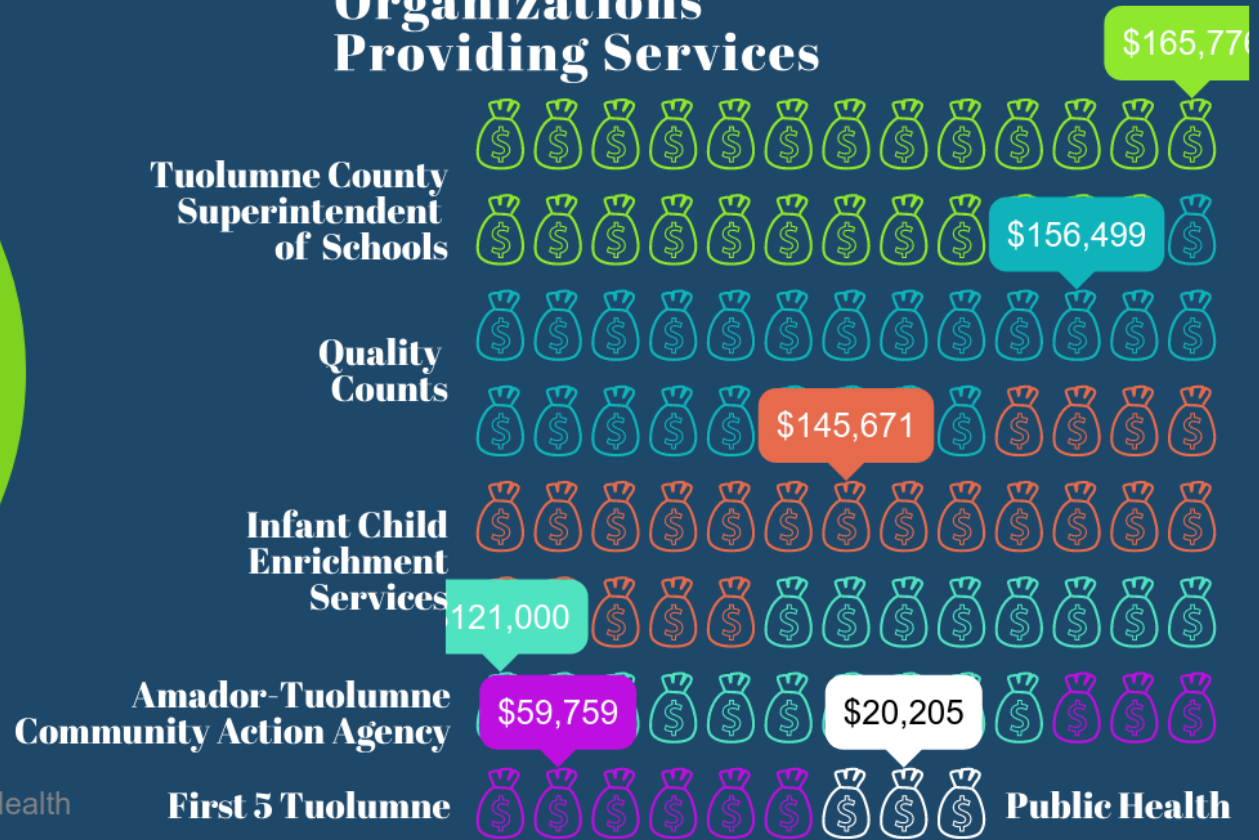


Funds Expended by Result Area



■ Family Functioning
 ■ Child Development
 ■ Health
 ■ Systems of Care Local

Organizations Providing Services





FIRST 5
TUOLUMNE COUNTY

*Helping Children Thrive,
from Birth to Five*



/first5tuolumne



first5tuolumne



@first5tuolumne