



First 5: Tuolumne County

In partnership with the

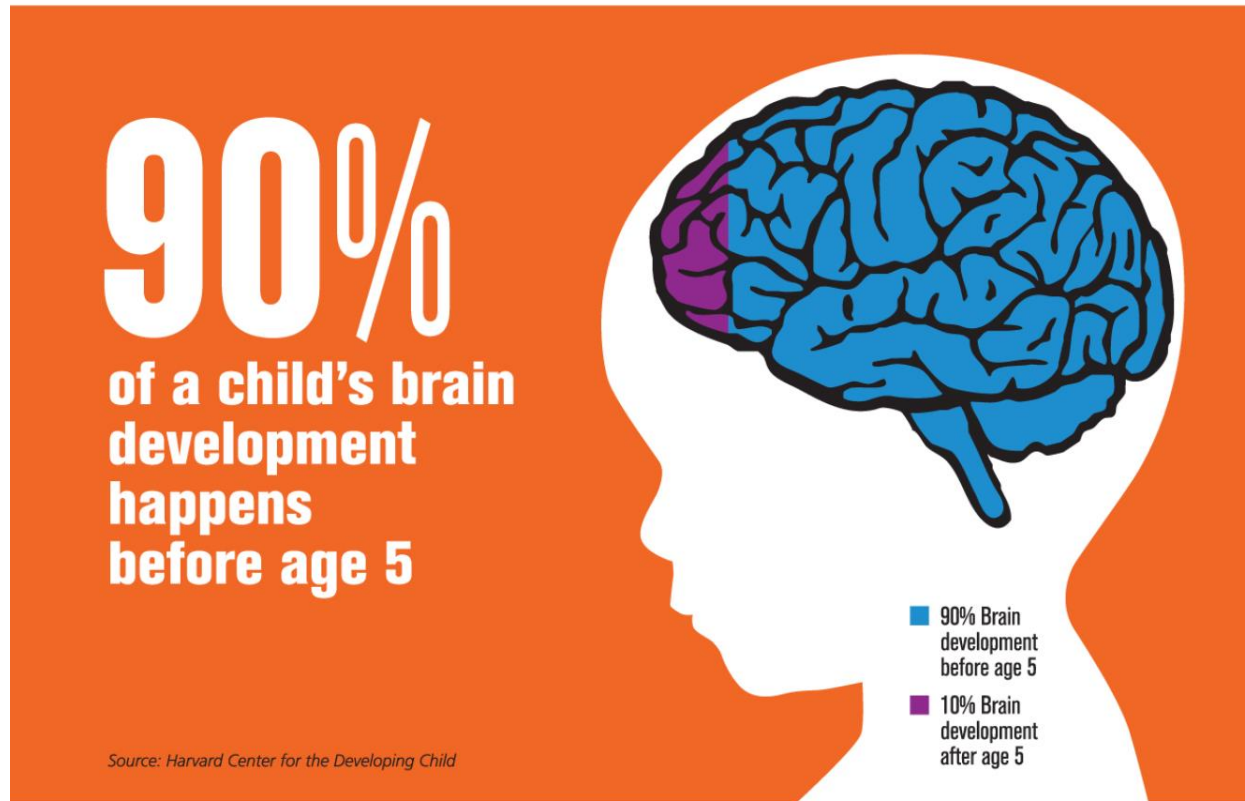


FIRST 5
ASSOCIATION
OF CALIFORNIA

Why is First 5 Important?

“Early experiences affect how the brain develops, shaping how children learn, behave, and grow.”

- The Center for the Developing Child at Harvard University



What Happens in the First 5 Years Affects Us All

Supporting the early years can change the trajectory of a lifetime – and a society

WHAT HAPPENS AS A CHILD...

...SHAPES THE ADULT...

...AND THE REST OF SOCIETY



RESILIENT FAMILIES

Positive parenting
that fosters social and
emotional resilience



**Improved ability to
relate** to others in
school, work, and at
home



Safe and thriving
communities; reduced
social welfare costs



**COMPREHENSIVE
HEALTH AND
DEVELOPMENT**

Access to well-
coordinated
medical care



Healthy habits,
healthier lives



Healthier population,
savings on social and
medical costs



**QUALITY EARLY
LEARNING**

Participation
in high-quality
preschool

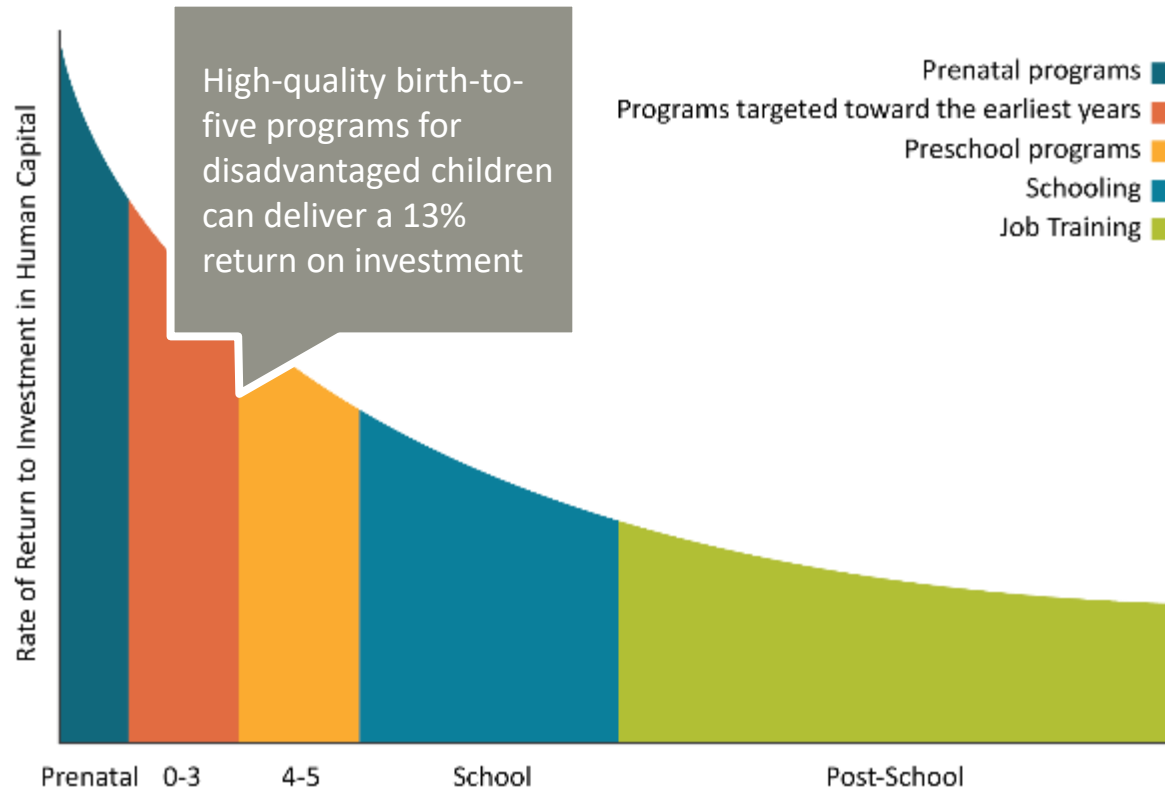


Increased likelihood
of **high school
graduation**



**More skilled
workforce**

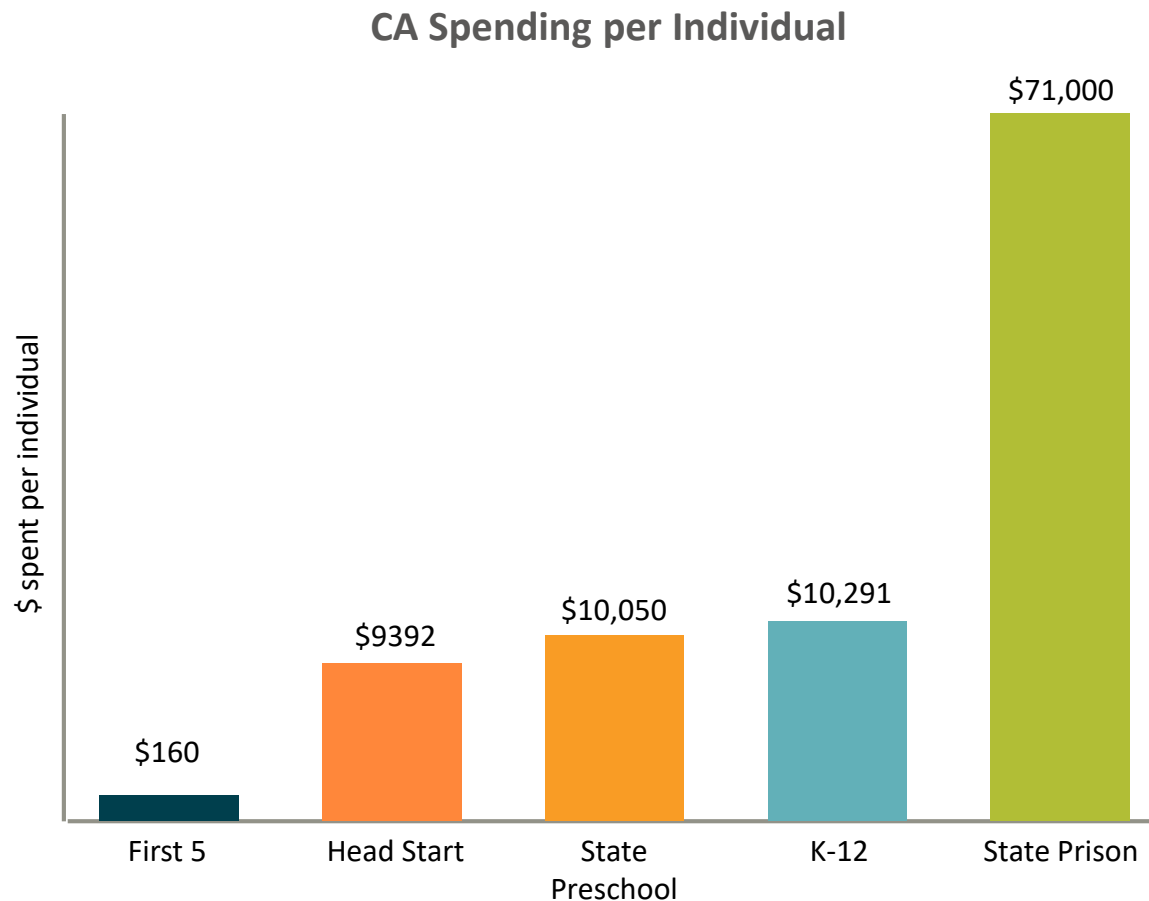
Public Money Goes Furthest When We Invest in Our Youngest Kids



Source: James Heckman, Nobel Laureate in Economics

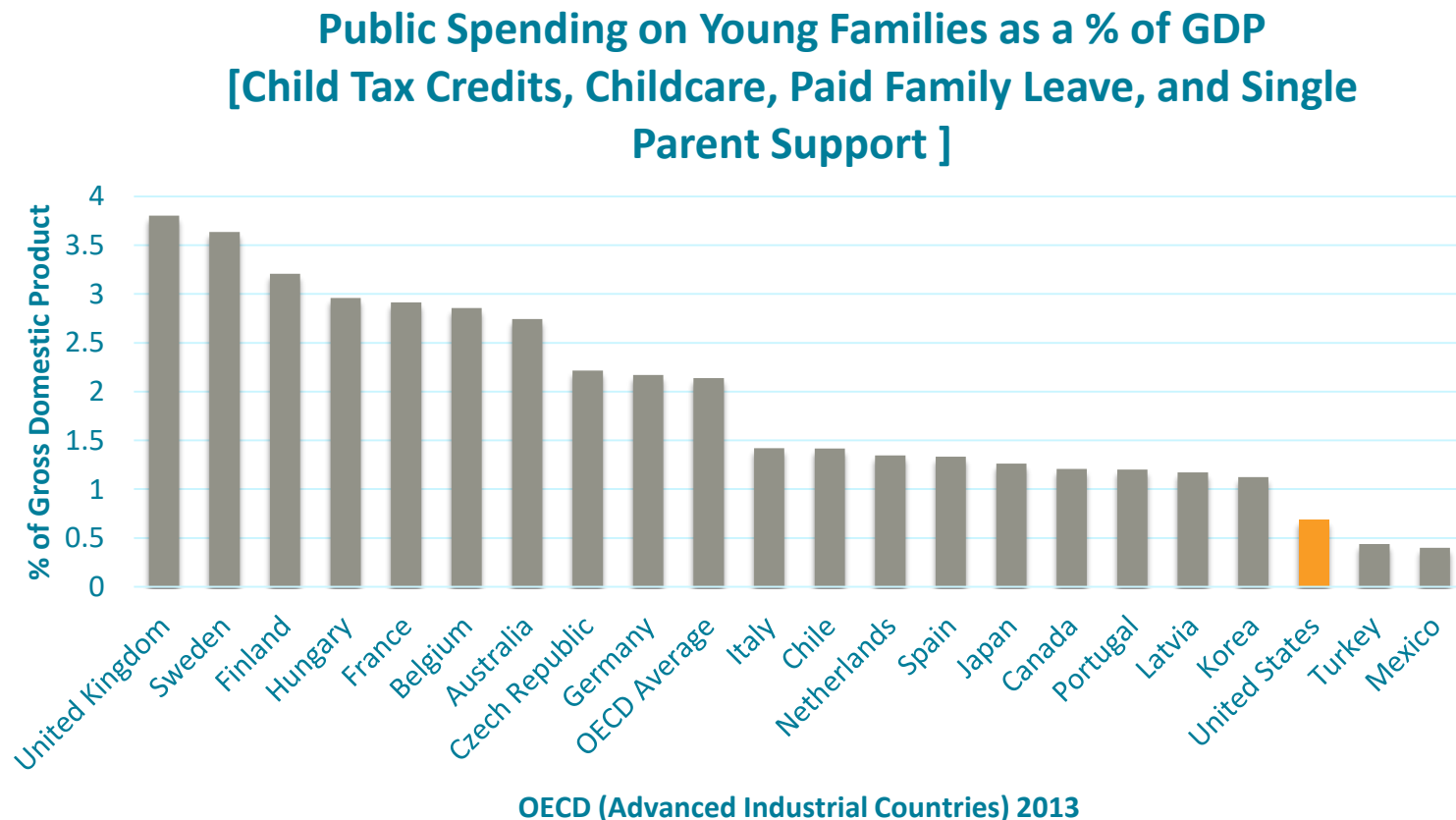
CA isn't Spending Enough on Little Kids

Dollars allocated to early childhood through First 5 are marginal compared to other investments



Other Countries Invest in Families, The US Lags

And the US lags behind its global peers in spending on young families



Inequalities Exist Across the State

The magnitude of need in CA is enormous. In every community there are those who are born facing greater challenges



47% of CA's children live in or near poverty

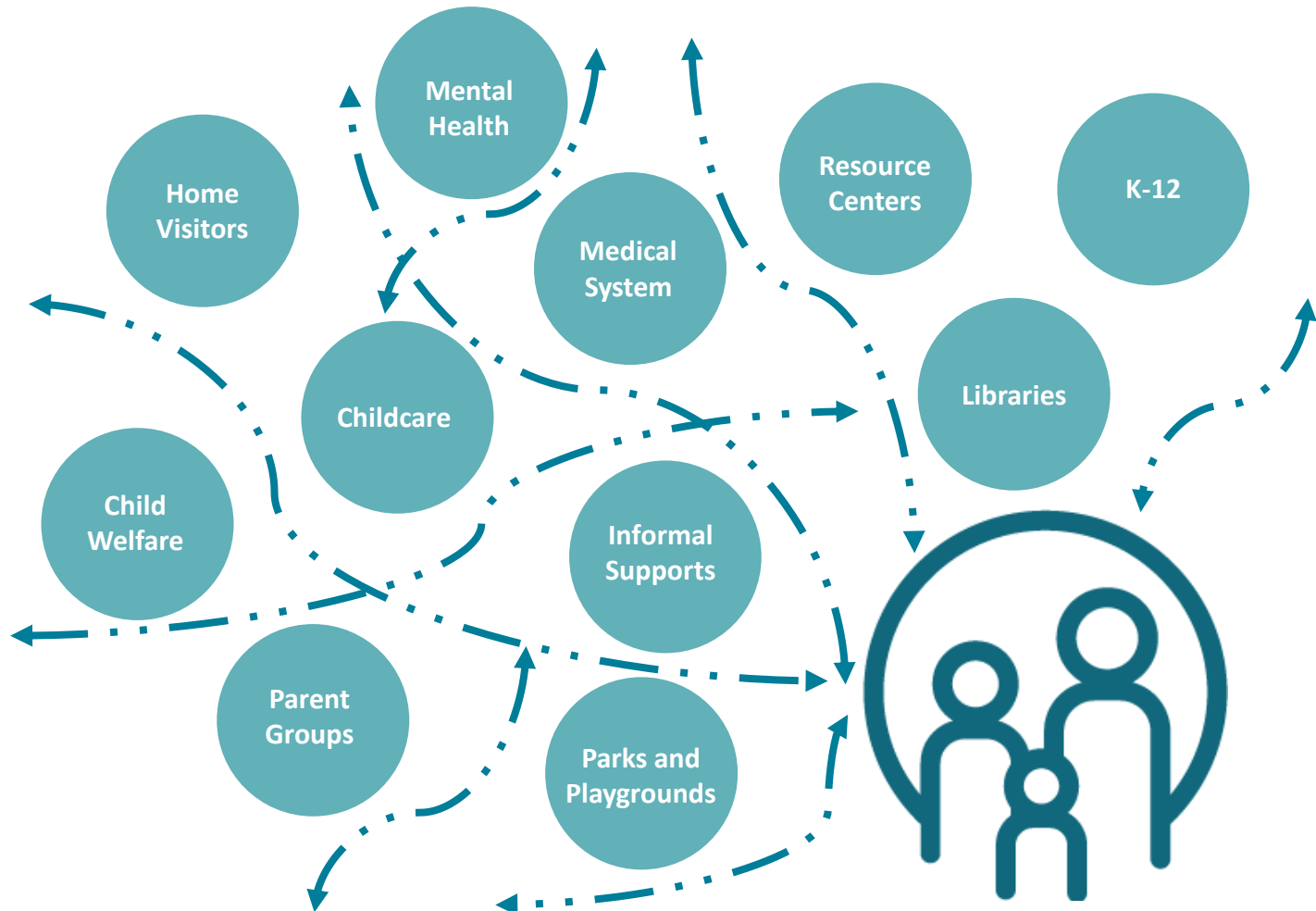


Life expectancy varies dramatically from one neighborhood to the next:

- In the Bay Area, life expectancies across ZIP codes vary by as much as **13 years**
 - *The life expectancy in West Oakland is **67**, similar to countries such as Turkmenistan, Kazakhstan, and North Korea*
- In West Fresno, life expectancy is **>20 years lower** than in other parts of the city
- In Los Angeles, there's a **12-year gap** in life expectancy across neighborhoods

Families Struggle to Navigate Siloed Systems

The funding that *does* go to early childhood development is managed by many sources. Between formal and informal supports, there's no “one-stop shop” for families.



We Are Not Meeting the Needs of CA's Children

Those that benefit the most from early childhood supports are not getting what they need



RESILIENT FAMILIES

- 1 in 7 children reported for abuse or neglect before age 5
- 1 in 4 young children in CA experience housing instability



COMPREHENSIVE HEALTH AND DEVELOPMENT

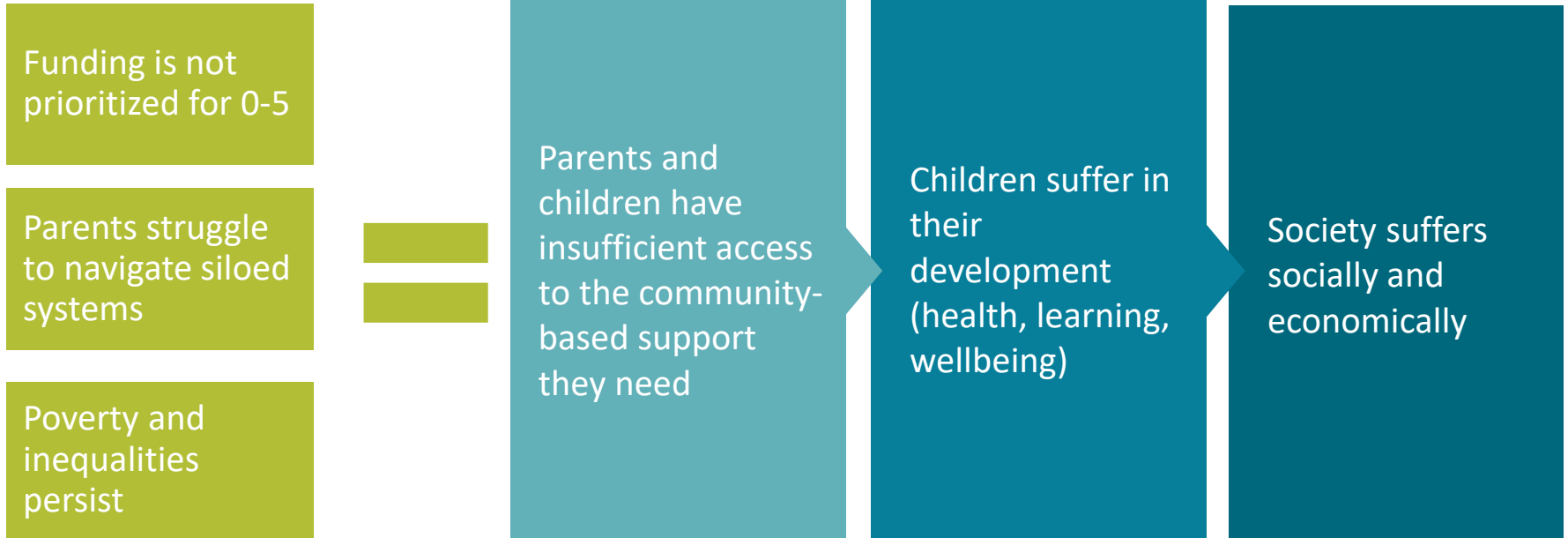
- **As many as 10K children** are missing out on cost-saving early intervention each year
- CA kids have high rates of untreated dental decay



QUALITY EARLY LEARNING

- Only **45%** of 3rd graders read at grade level
- Child care costs are too high for most families

Summing Up the Problem We Face



First 5 Vision Statement



First 5 Supports Community Efforts



SIGNIFICANT FUNDER:

First 5 has made nearly \$10B in investments over 20 years, and uses its experience to direct funds strategically



LOCAL EXPERTISE - STATEWIDE:

First 5 works on the ground with children and families in every CA county, and develops innovative solutions that work



EXTENSIVE PARTNERSHIPS:

First 5 has relationships with families, government, nonprofits, businesses, and influencers in every county






A VOTER MANDATE:

First 5 is the only state entity focused on the whole child and empowered to coordinate all sectors

First 5 focuses energy and assets upstream, to make the biggest impact possible on young kids.

Key First 5 Investment Areas

Mission: First 5 builds the early childhood systems and supports needed to ensure California's young children are **safe, healthy, and ready to succeed in school and life**

RESILIENT FAMILIES 	COMPREHENSIVE HEALTH AND DEVELOPMENT 	QUALITY EARLY LEARNING 
Prevention of abuse and neglect	High-quality prenatal and new family care	Access to quality infant/toddler care
Parent capacity-building and supports	Universal screening and early intervention	High-quality universal preschool
Safe, stable, and supportive neighborhoods	Mental health supports for parents and children	Linkages to mental health and other supports

Research demonstrates the transformative power of these programs.

The Work of First 5 is Holistic and Aspirational

First 5 builds the early childhood systems and supports needed to ensure California's young children are **safe, healthy, and ready to succeed in school and life**

MISSION

As a voice for the state's youngest kids, we bring together **partners** and **leverage multiple funding sources** to **strengthen systems of care** through:

- Communications
- Advocacy
- Collaboration
- Skill Building
- Innovation and Learning

So children and families have access to the community-based **supports** they need.



One day, California's success will be measured by the wellbeing of its youngest children

VISION